

DX7LD - STRATUS

MULTI-DECK SPECIFICATION SHEET



General Case Data	Case Length (ft)			APPLICATIONS
	4'	8'	12'	
Total Display Area (ft ²)	21.30	42.60	63.97	
Cubic Capacity (ft ³)	47.95	95.91	143.99	
Max Shelf Depth (in) [Top/Bottom]	22/22	22/22	22/22	
Weight (lb)	-	-	-	
Refrigeration Data (General)				
Discharge Air Velocity (fpm)	185	185	185	
Fan Speed (rpm)	1400	1400	1300	
Discharge Air Temp (°F)	34	34	34	
Conventional Thermal Load, Single (Btuh) unlighted	722	1440	2161	
Parallel Thermal Load, Single (Btuh) unlighted	657	1310	1965	
Refrigeration Data (HFC)				
Evaporator Temperature (°F)	28	28	28	
Superheat Setpoint (°F)	6 - 8	6 - 8	6 - 8	
Estimated Refrigerant Charge (lbs)	2.116	4.231	6.326	
Refrigeration Data (Glycol)				
Supply Temperature (°F)	20	20	20	
Flow (GPM)	0.234	0.468	0.704	
Fluid %	35	35	35	
Pressure Drop (PSID)	0.40	0.40	0.80	
Electrical Data (Amps/Watts)				
115V/60Hz, 1 Phase				
Fans	0.17	0.33	0.60	
Defrost Data (off Cycle)				
Defrosts per Day	Failsafe Duration (min) ¹	Termination Temp (°F)	Drip Time (min)	
3	45	47	0	

¹ At ASHRAE conditions. For conditions above 75°F, 55% RH, increase defrost time by 15 min. Type I refrigerator, intended for use in an area where the environmental conditions are controlled and maintained that conditions do not exceed 75°F and 55% relative humidity. Heatcraft Worldwide Refrigeration, whose policy is one of continuous improvement, reserves the right to change at any time specifications, designs, or prices without incurring obligation. DOE 2017 Compliant

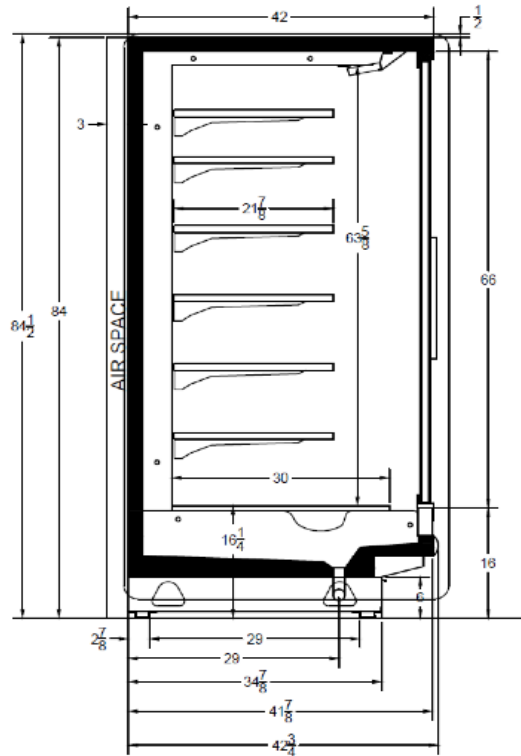


The above case model has case lengths that are UL and NSF approved.

DX7LD - STRATUS

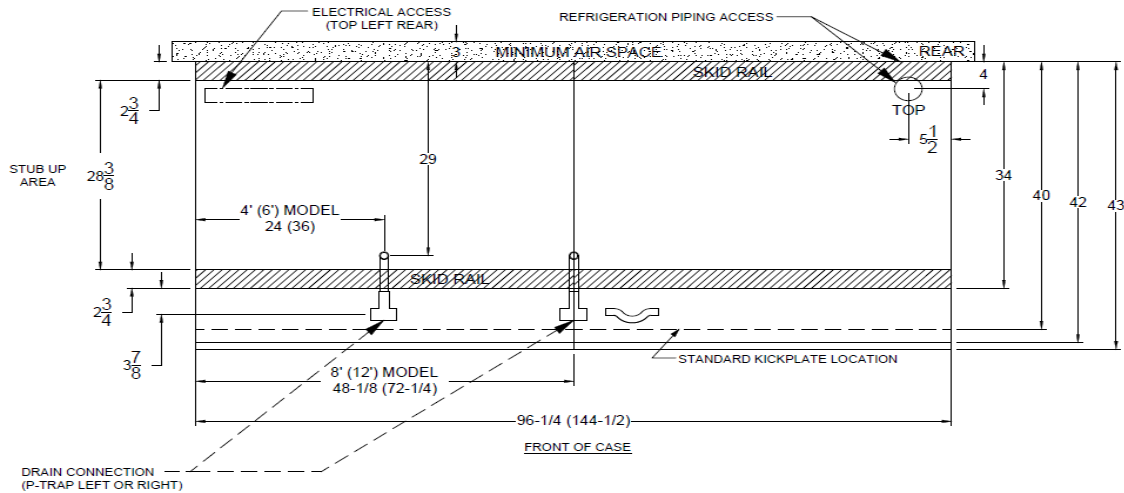
MULTI-DECK SPECIFICATION SHEET

DX7LD CROSS VIEW



Add 3" thickness for a pair of ends.

DX7LD PLAN VIEW



5201 Transport Blvd
Columbus, GA 31907
P: 800.866.5596 • F: 706.568.8990



www.kysorwarren.com

