

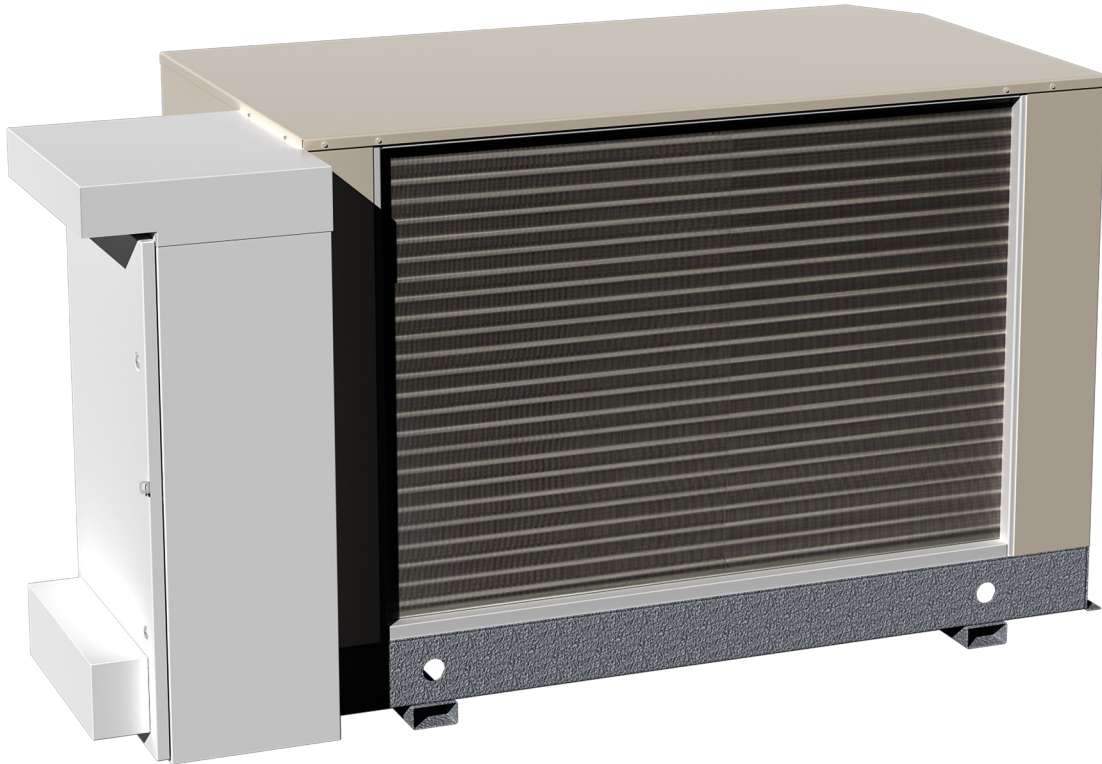


**KYSOR WARREN**  
eptarefrigeration



**ECO**  
MINI 2 

**FAST SHIPMENT PROGRAM AVAILABLE FOR  
SPECIFIC MODELS, SHIPMENTS BEGINNING  
END OF FIRST QUARTER 2023**



## QUICK & SIMPLE CO2 SYSTEM INSTALLATION/CONVERSION

- Ideal for new construction, remodels and expansions
- Low GWP meets current and upcoming regulations

## KEY FEATURES

- Shorter lead times with fast ship standard configurations
- All components integrated into single cabinet
- Advanced electronic controls that can integrate with most monitoring systems
- Indoor or outdoor installation

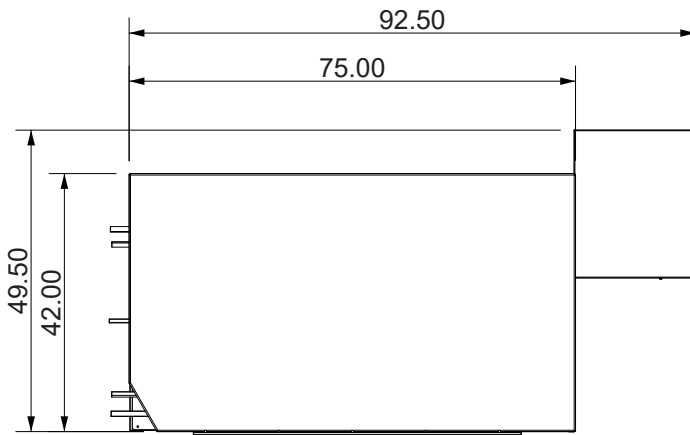
## ECO-FRIENDLY

This system uses CO<sub>2</sub>, a natural refrigerant, providing an environmentally sound solution for reaching your refrigeration & sustainability goals.

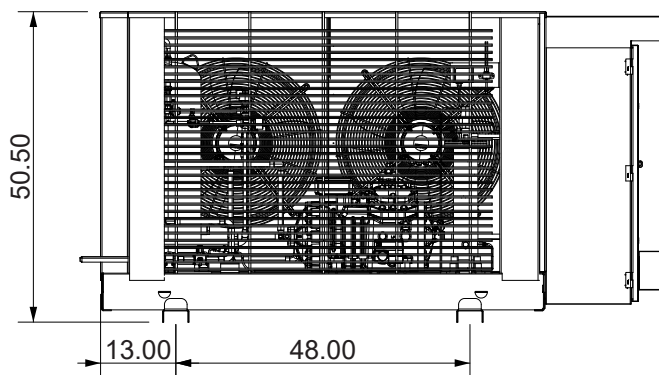
# R744

## SPECIFICATIONS & OPTIONS

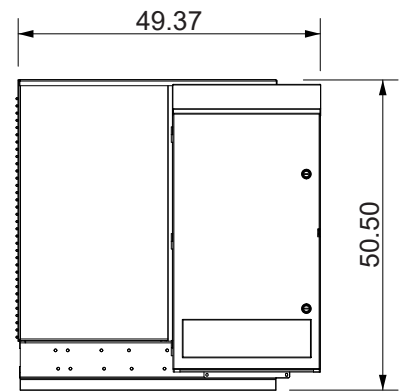
- MT units 40,000 , 70,000 or 100,000 BTU/H capacity  
- 208-230V or 460V
- LT units 40,000 or 70,000 BTU/H capacity  
- 208-230V or 460V
- 93"L x 42"W x 48"H
- 1,400 lbs.
- Ships standard with a Dorin compressor and Carel control
- Bitzer and Copeland compressors available on customized orders for medium temperature only



Plan View



Front View



Side View

### MEDIUM TEMP 460/3/60V MODELS

- ED-010-040-CM-4-OXV-A
- ED-010-070-CM-4-OXV-A
- ED-010-100-CM-4-OXV-A

### MEDIUM TEMP 208-230/3/60V MODELS

- ED-010-040-CM-2-OXV-A
- ED-010-070-CM-2-OXV-A
- ED-010-100-CM-2-OXV-A

### LOW TEMP 460/3/60V MODELS

- ED-100-040-CL-4-OXV-A
- ED-100-070-CL-4-OXV-A

### LOW TEMP 208-230/3/60V MODELS

- ED-100-040-CL-2-OXV-A
- ED-100-070-CL-2-OXV-A

**CONTACT YOUR SALES REPRESENTATIVE TO PLACE AN ORDER**