

	SUSTAINABILITY & NEW TECHNOLOGIES	DISTRIBUTION:
	FULL TRANSCRITICAL EFFICIENCY	EVERYONE
	FIELD SERVICE INSTRUCTIONS	PROJECT #



# FULL TRANSCRITICAL EFFICIENCY

Rev.	Date	By	Purpose
0	8/2/2022	IVC	Initial Release

Document #: SNT-0005	Author: I. Chaparro	Reviewed by: I. Chaparro
Revision: 0	Page 1 of 4	Date: 08/01/2022

 <b>KYSOR WARREN</b> <small>expansionrefrigeration</small>	<b>SUSTAINABILITY &amp; NEW TECHNOLOGIES</b>	DISTRIBUTION: <b>EVERYONE</b>
	<b>FULL TRANSCRITICAL EFFICIENCY</b>	
	FIELD SERVICE INSTRUCTIONS	

## FTE ENABLE PROCEDURE:

1. Open valves B08, B09 and B10
2. Close valves B02 & B05
3. Open valves B11 & B12
4. Remove jumper between 24 & 10 from FTE PLC box
5. Close valve B13
6. Change MT suction setpoint between 4 – 8 F above regular setpoint

## FTE SHUT DOWN PROCEDURE

1. Make jumper in FTE box (see figure # 4.0) to disable FTE.
2. Close B11, LT liquid will feed from flash tank. Wait until FTE tank is empty (drain time varies).
3. Open valve B05
4. Close valve B09 and B10.
5. Open valve B02.
6. Close valve B08.
7. Verify all liquid sensors are off (no liquid, can be seen also in the FTE electrical panel).
8. If liquid is still present, allow more time for FTE tank to drain until all sensors are off or no sensing liquid.
9. Close valve B12.
10. Open valve B13.
11. Check flash tank liquid level. If liquid is above second sight glass (50%), remove CO2 from the system to have liquid level in flash tank between first and second sight glasses.
12. Valves open/close should look like same as NON FTE MODE
13. MT setpoint should be set (lowered) to match refrigeration legend.

Document #: SNT-0005	Author: I. Chaparro	Reviewed by: I. Chaparro
Revision: 0	Page 2 of 4	Date: 08/01/2022



KYSOR WARREN  
expansionrefrigeration

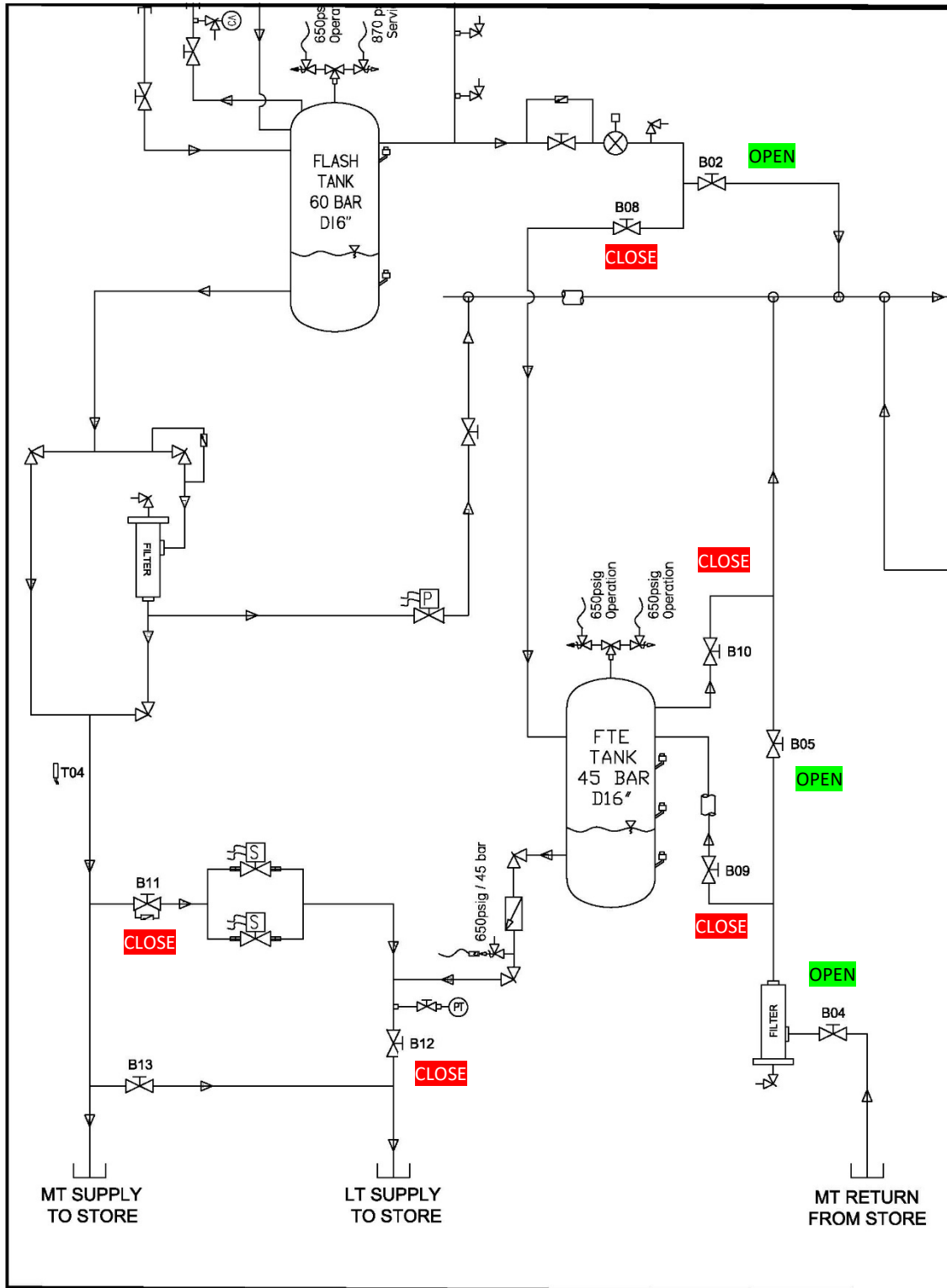
SUSTAINABILITY & NEW TECHNOLOGIES  
FULL TRANSCRITICAL EFFICIENCY

FIELD SERVICE INSTRUCTIONS

DISTRIBUTION:  
EVERYONE

PROJECT #

# NON FTE OPERATION



Document #: SNT-0005	Author: I. Chaparro	Reviewed by: I. Chaparro
Revision: 0	Page 3 of 4	Date: 08/01/2022



KYSOR WARREN  
expansionrefrigeration

SUSTAINABILITY & NEW TECHNOLOGIES  
FULL TRANSCRITICAL EFFICIENCY

FIELD SERVICE INSTRUCTIONS

DISTRIBUTION:  
EVERYONE

PROJECT #

# FTE OPERATION

